

40

UNIQUE VISIONS OF THE DEVELOPMENTAL ASSETS IMPORTANT TO ST. LOUIS PARK YOUTH



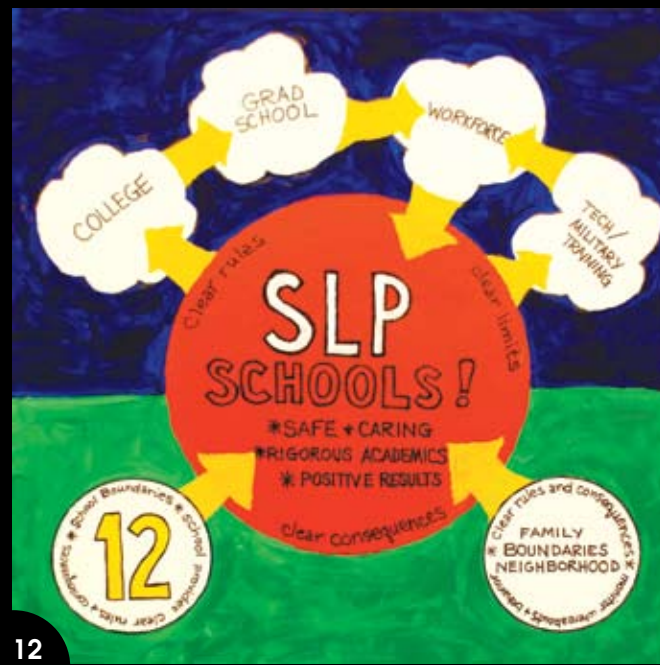
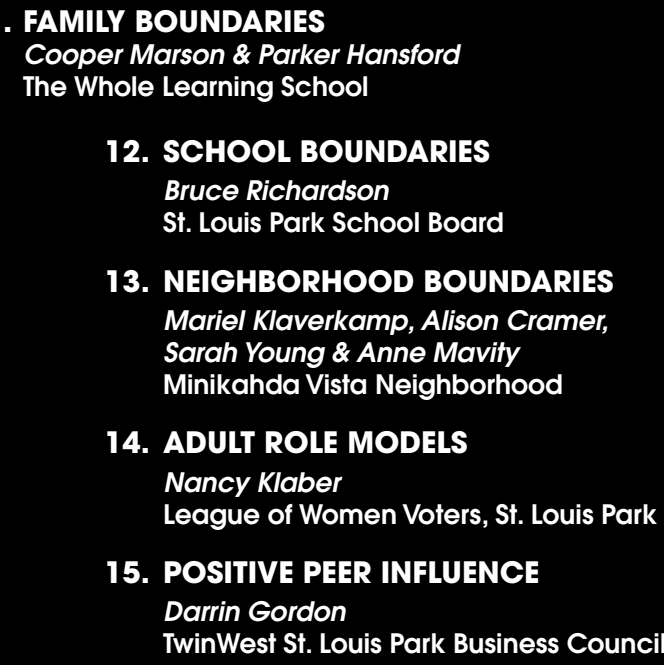
Find out more at www.children-first.org



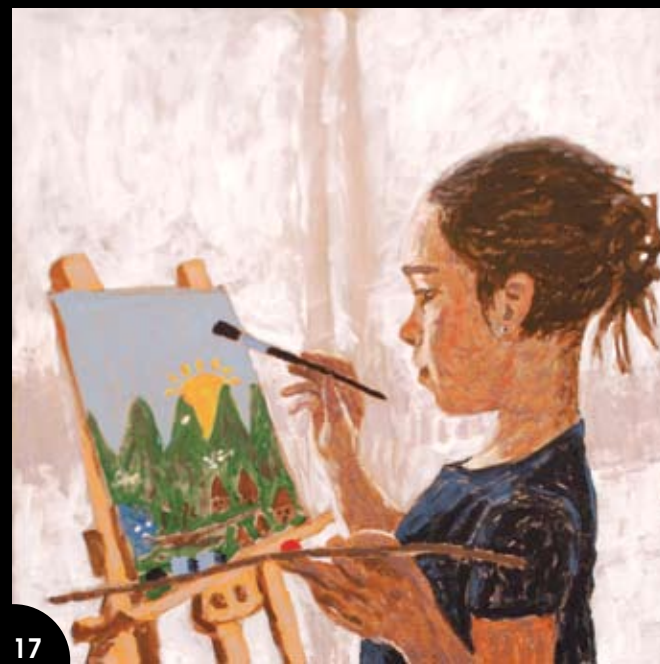
- 1. FAMILY SUPPORT**
David M. Fitzgerald
Creative Play - St. Louis Park Community Education
- 2. POSITIVE FAMILY COMMUNICATION**
Angela, Kate, John & Hank Bernhardt
Park Nicollet Foundation
- 3. OTHER ADULT RELATIONSHIPS**
Iejia Malingundi
St. Louis Park Transportation, Inc.



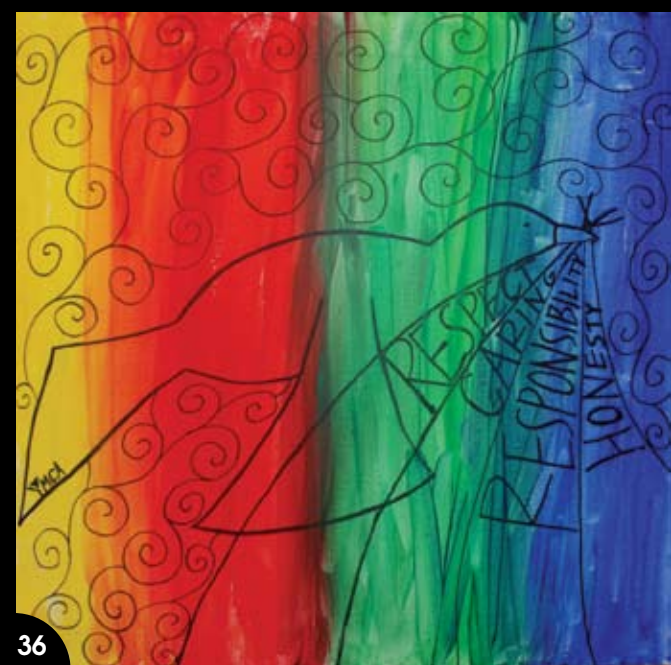
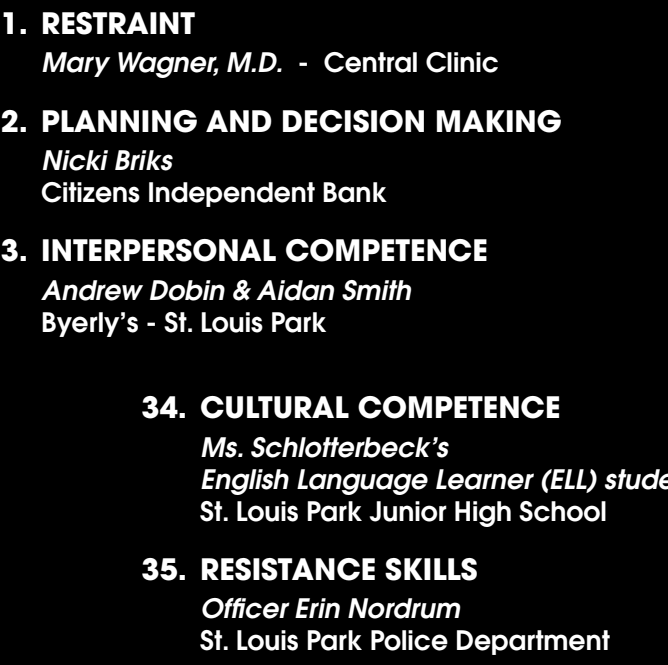
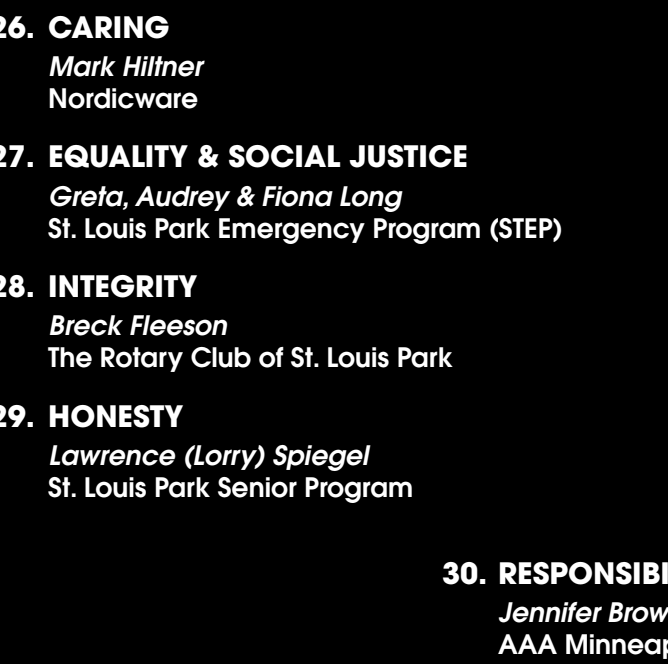
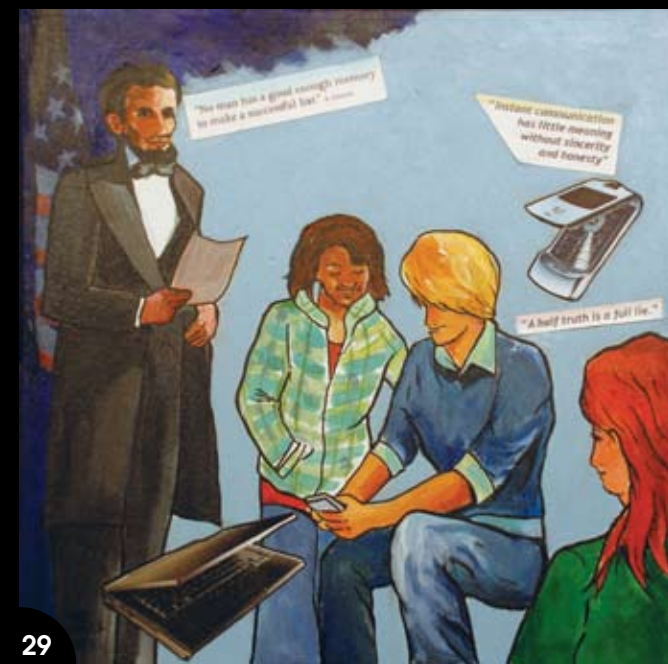
- 6. PARENT INVOLVEMENT IN SCHOOLING**
Chaim Y. Clein
St. Louis Park High School, 9-12 Program
- 7. COMMUNITY VALUES YOUTH**
William Hessian
Parklacular
- 8. YOUTH AS RESOURCES**
Malcolm Adams
Boys 2 Men, St. Louis Park High School
- 9. SERVICE TO OTHERS**
4th-12th Grade Members
Youth Development Committee
- 10. SAFETY**
Niki Typpo
St. Louis Park Fire Department



- 11. FAMILY BOUNDARIES**
Cooper Mason & Parker Hanford
The Whole Learning School
- 12. SCHOOL BOUNDARIES**
Bruce Richardson
St. Louis Park School Board
- 13. NEIGHBORHOOD BOUNDARIES**
Marit Klaverkamp, Alison Cramer, Sarah Young & Anna Mawley
Minikahda Vista Neighborhood
- 14. ADULT ROLE MODELS**
Nancy Klaber
League of Women Voters, St. Louis Park
- 15. POSITIVE PEER INFLUENCE**
Darrin Gordon
TwinWest St. Louis Park Business Council



- 21. ACHIEVEMENT MOTIVATION**
Maria Fleischhacker
Benilde-St. Margaret's High School
- 22. SCHOOL ENGAGEMENT**
Madeline Johnson, Casey Krele, Sammy Mahlo & Ella Thomas
Aquila Primary Center
- 23. HOMEWORK**
Jon Reiss
Meadowbrook Collaborative
- 24. BONDING TO SCHOOL**
Brittany Oquist - Day One
- 25. READING FOR PLEASURE**
Fran Addington
St. Louis Park Library



- 31. RESTRAINT**
Mary Wagner, M.D. - Central Clinic
- 32. PLANNING AND DECISION MAKING**
Nicki Brisk
Citizens Independent Bank
- 33. INTERPERSONAL COMPETENCE**
Andrew Dobin & Aidan Smith
Byerly's - St. Louis Park
- 34. CULTURAL COMPETENCE**
Ms. Schlotterback's
English Language Learner (ELL) students
St. Louis Park Junior High School
- 35. RESISTANCE SKILLS**
Officer Erin Nordrum
St. Louis Park Police Department

